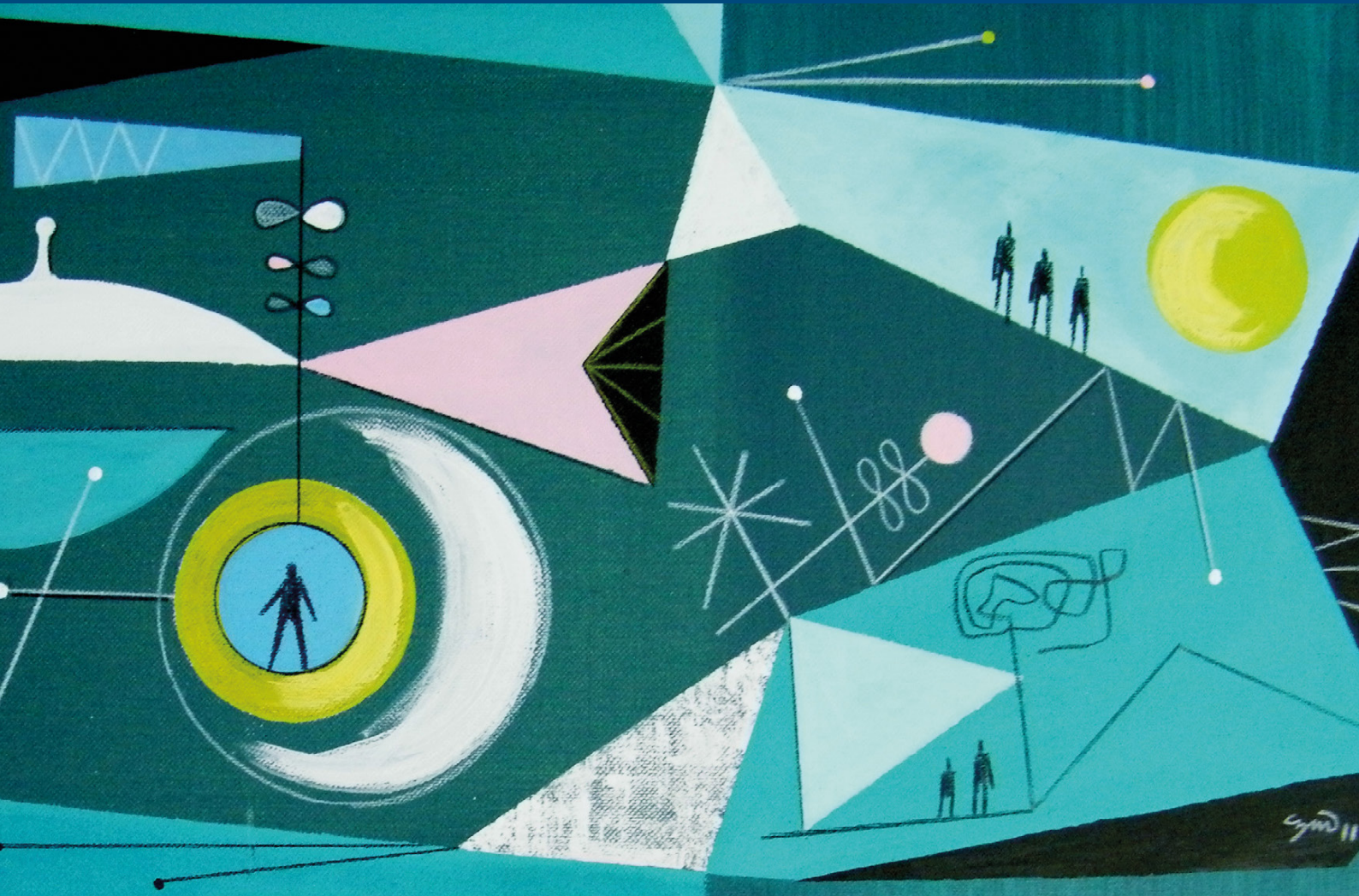


# nature human behaviour



## Publishing from 2017

A monthly, online-only journal dedicated to publishing original research, reviews, and comment into human behaviour, as well as its origins, development, and disorders.

### **Nature Human Behaviour: about**

Drawing from a broad spectrum of social and natural science disciplines, *Nature Human Behaviour* will publish research of outstanding significance into any aspect of human behaviour, its psychological, biological, and social bases.

How do humans perceive, think, feel, decide, and act? How do they interact with their environments and others? How do these abilities develop and decline over the lifespan? How do they evolve and compare with other species? How do they vary among individuals, groups, and cultures? How are they shaped by socioeconomic and political factors? How are they affected by disease or deprivation? What interventions can influence individual behaviours or outcomes? The journal welcomes research from any discipline that provides significant original insight into these questions.

The research will be complemented by expert News and Views, Reviews and Commentaries that help place the research in context. The range of article types will help provide readers with a broad perspective on the entire field.

### **Nature Human Behaviour: readership**

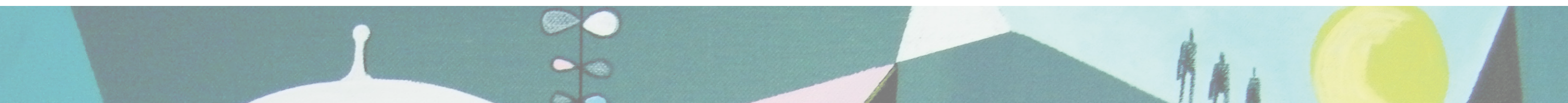
*Nature Human Behaviour* will not only play a pivotal role in forging interdisciplinary ties across behavioural science research communities, but also aims to strengthen the reach and impact of behavioural research in addressing our most pressing societal challenges. As such, the journal will provide a place where all researchers and policymakers interested in all aspects of can come together to learn about the most accomplished and significant advances in the field and to discuss topical issues.

### **Nature Human Behaviour: areas covered include**

Anthropology	Evolution
Artificial Intelligence	Genetics
Business Studies	Geography
Cognitive Science	Linguistics
Communication	Management
Criminology	Neurology
Cultural Studies	Neuroscience
Ecology	Political Science
Economics	Psychiatry
Education	Psychology
Epidemiology	Public Policy
Ethology	Sociology

### **Nature Human Behaviour: site license ensures your users benefit from**

- The first selective, high-visibility primary research journal for the behavioural sciences, bringing together research from both the natural and social sciences, including neuroscience, psychology, economics, political science, anthropology, behavioural ecology, evolution, education, and public policy
- The only journal in the field to combine full length research articles with short articles and news orientated content placing the science in to context for researchers and non-researchers alike
- Advance Online Publication — papers published in advance of the complete issue
- Supplementary information to present the full depth of studies – including source data for figures
- Mobile-optimized content — *Nature Human Behaviour* will offer fully mobile-optimized articles, enabling your users to access site license content via their personal devices





## Contact us

For more information about *Nature Human Behaviour* and to request a tailored site license price quote, please contact your Springer Nature sales representative or the nearest Springer Nature regional office listed below.

### USA | Canada

T: +1 888 331 6288  
F: +1 212 689 9711  
E: [institutions@us.nature.com](mailto:institutions@us.nature.com)

### South America

T: +54 11 4708 8000  
F: +54 11 4708 8000  
E: [lasales@us.nature.com](mailto:lasales@us.nature.com)

### Brazil

Macmillan do Brasil  
T/F: +55 11 4613 2277  
E: [lasales@us.nature.com](mailto:lasales@us.nature.com)

### Central America and Caribbean

T: +52 55 5482 2200  
F: +52 55 5482 2200 ext 2399  
E: [lasales@us.nature.com](mailto:lasales@us.nature.com)

### UK | Rest of the World

T: +44 (0)20 78434759  
F: +44 (0)20 7843 4998  
E: [institutions@nature.com](mailto:institutions@nature.com)

### India

T: +91 124 307 9662  
F: +91 124 307 9602  
E: [npgindia@nature.com](mailto:npgindia@nature.com)

### Greater China

T: +86 21 2422 5000  
[nature.asia/sch-contact](mailto:nature.asia/sch-contact)

### Japan

T: +81 (0) 3 3267 8769  
F: +81 (0) 3 3267 8746  
[nature.asia/jp-contact](mailto:nature.asia/jp-contact)

### Korea

T: +82 2 868 2343  
F: +82 2 868 2396  
[nature.asia/ko-contact](mailto:nature.asia/ko-contact)

### Hong Kong | Macau | Taiwan

T: +886 2 2388 3208  
F: +886 2 2375 6882  
[nature.asia/tch-contact](mailto:nature.asia/tch-contact)

### Australia | New Zealand

T: +61 3 9825 1066  
F: +61 3 9825 1010  
E: [nature@macmillan.com.au](mailto:nature@macmillan.com.au)

### Southeast Asia

T: +61 3 9825 1066  
F: +61 3 9825 1010  
[nature.asia/en-contact](mailto:nature.asia/en-contact)