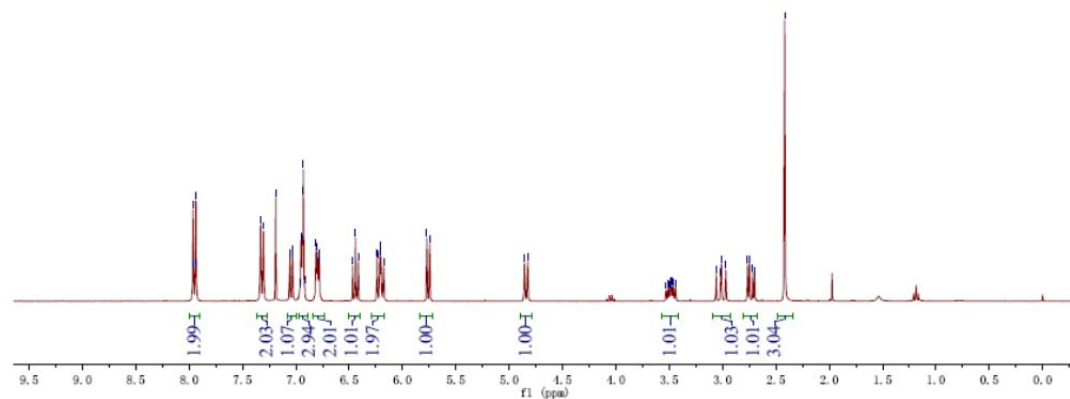
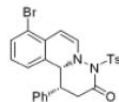


¹H NMR spectrum of **31**

Feb04-2015
gio guo geh gc 77
proton CDC13 /opt/topap

7.9641
7.9385
7.9419
7.9363
7.3304
7.3036
7.1888
6.9526
6.9488
6.9379
6.9302
6.8105
6.4410
6.2190
5.7457

4.8575
4.8269
3.5306
3.5126
3.5002
3.4893
3.4823
3.4714
3.4591
3.4410
3.0596
3.0182
3.0110
2.9696
2.7662
2.7481
2.7176
2.6995
2.4178



¹³C NMR spectrum of **31**

Feb04-2015
gio guo geh gc 77
carbon_256 CDC13 /opt/topap in av1 2

171.22
145.96
137.48
136.89
131.78
130.03
128.73
128.69
128.06
127.16
126.81
105.53

77.47
77.04
76.62
63.31
51.38
42.67
21.85

